

# SISI \* AMS2 USER MANUAL \* RELEASE 10.0

## A6680 \* MATERIAL INVENTORY INQUIRY

This Inquiry program will show fabric inventory information by location or dye lot and transfers in and out (if used). This is an on-screen version of MPC680 report.

AMS2 Data Base; FAB Data Base by option.

FAB, FABRIC/LOC, FABRIC Data Sets

### OPTIONS

849 Replaces location with dye lot  
1435 Use transfer fields must be on to see location details  
1496 Access FAB data base to get 'book cost'

The screen will display:

Print fabric with zero inventory (Y/n)

Print dye lot details (N/Y) or

Print fabric location details (N/Y)

Enter 1 - Fabric

2 - Trim

Return for ALL

Use standard cost (N/Y) if N will use actual

Enter fabric <type / to set new parameters>

Enter color (return for ALL)

The screen will display material code, clr descript, pattern, inventory, cost and extended cost. Locations or dye lots will print if used.

Type '/' to exit.

Note: if Run A6680.PUB.AMS2;Parm=1

Additional questions are asked as follows:

Enter inventory base:

1 = at standard

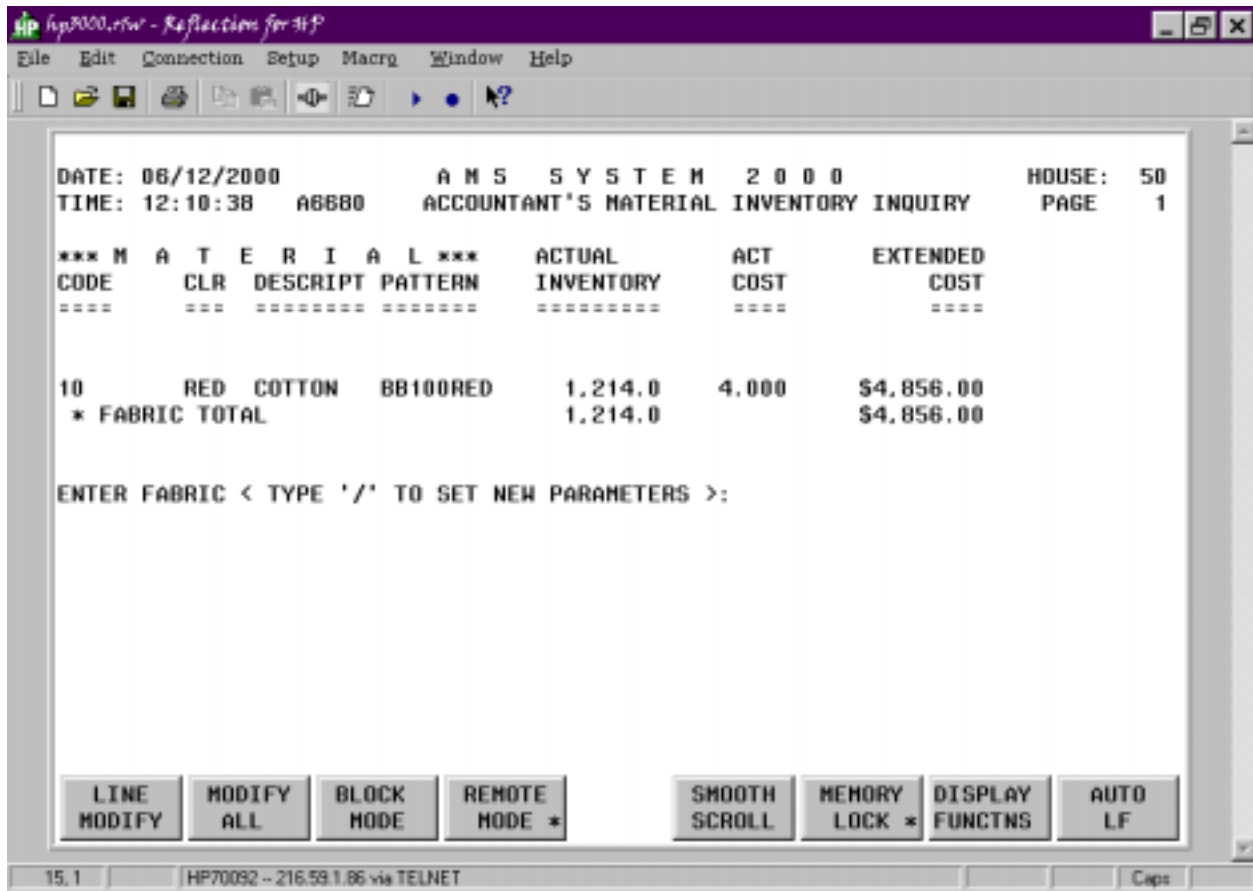
2 = at actual

3 = at std showing 'less B'

4 = at actual showing 'less B'

The screen will display whichever is your choice.

SISI \* AMS2 USER MANUAL \* RELEASE 10.0



A6680 \* MATERIAL INVENTORY INQUIRY