

SISI * AMS2 USER MANUAL * RELEASE 10.0

A5390 * OPEN TO SELL ON LINE INQUIRY

This program allows the user to view on screen the open to sell position for any given style/color instead of waiting for a hard copy report MPC539 to be created.

AMS2 Data Base

Data Sets: Styles, WIP, Orders
Files: W539A,B,C - 5539A,B,C

Tables: 50 Pick ticket description
 SD Style/dimension sort
 XS Order/line status to exclude from sold figures

Options

814 Must be on to run
828 Suppress price
1003 Print literal from Table 50
1273 To exclude Table XS status from sold figures

Run Instructions

RUN A5390.PUB.AMS2 or A A5390

The screen will prompt for style (8 positions) then for color (4 positions).
What inquiry selection do you want?

- 1 - Show only records with open to sell position
- 2 - Do not include zero balance lines
- 3 - Include zero balance positions

Select '1' or '2' or '3'

Screen will display:

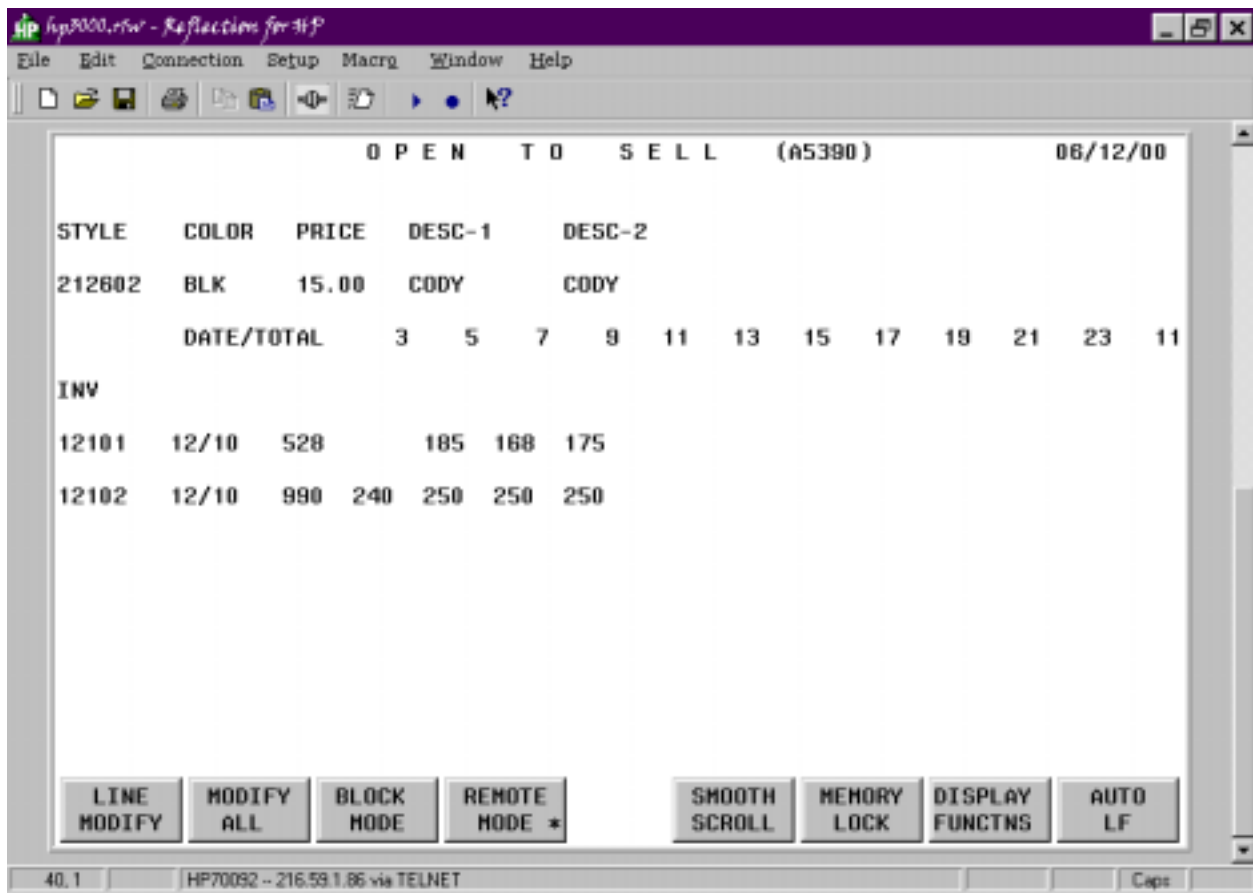
(depending on options)

Style Color Price Desc-1 Desc-2

Size headings for that style clr

Inventory by size, cut-no and date of open WIP, open/sell by size.

SISI * AMS2 USER MANUAL * RELEASE 10.0



A5390 * OPEN TO SELL ON LINE INQUIRY